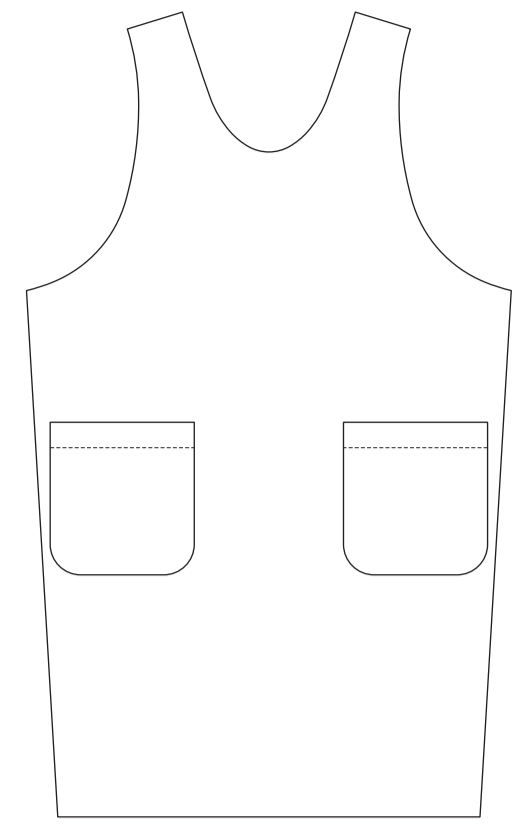
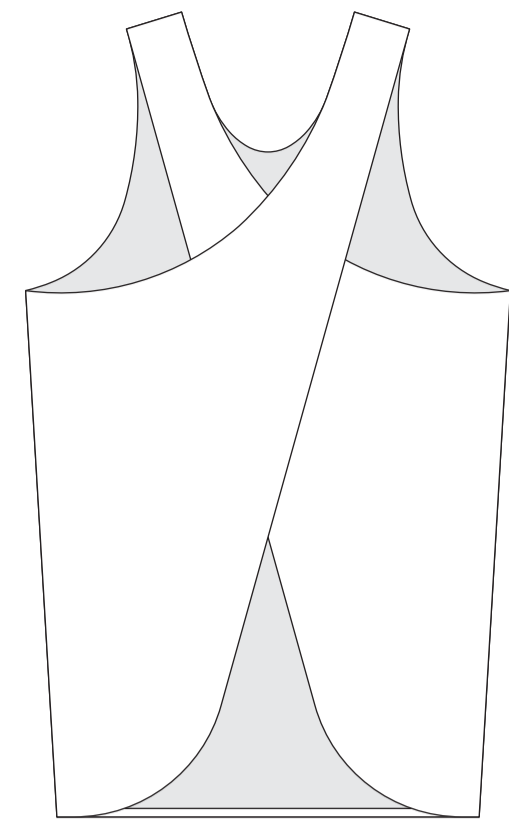


5 x 5 cm  
Square  
Print and  
Measure this  
Square to Ensure  
Proper Sizing



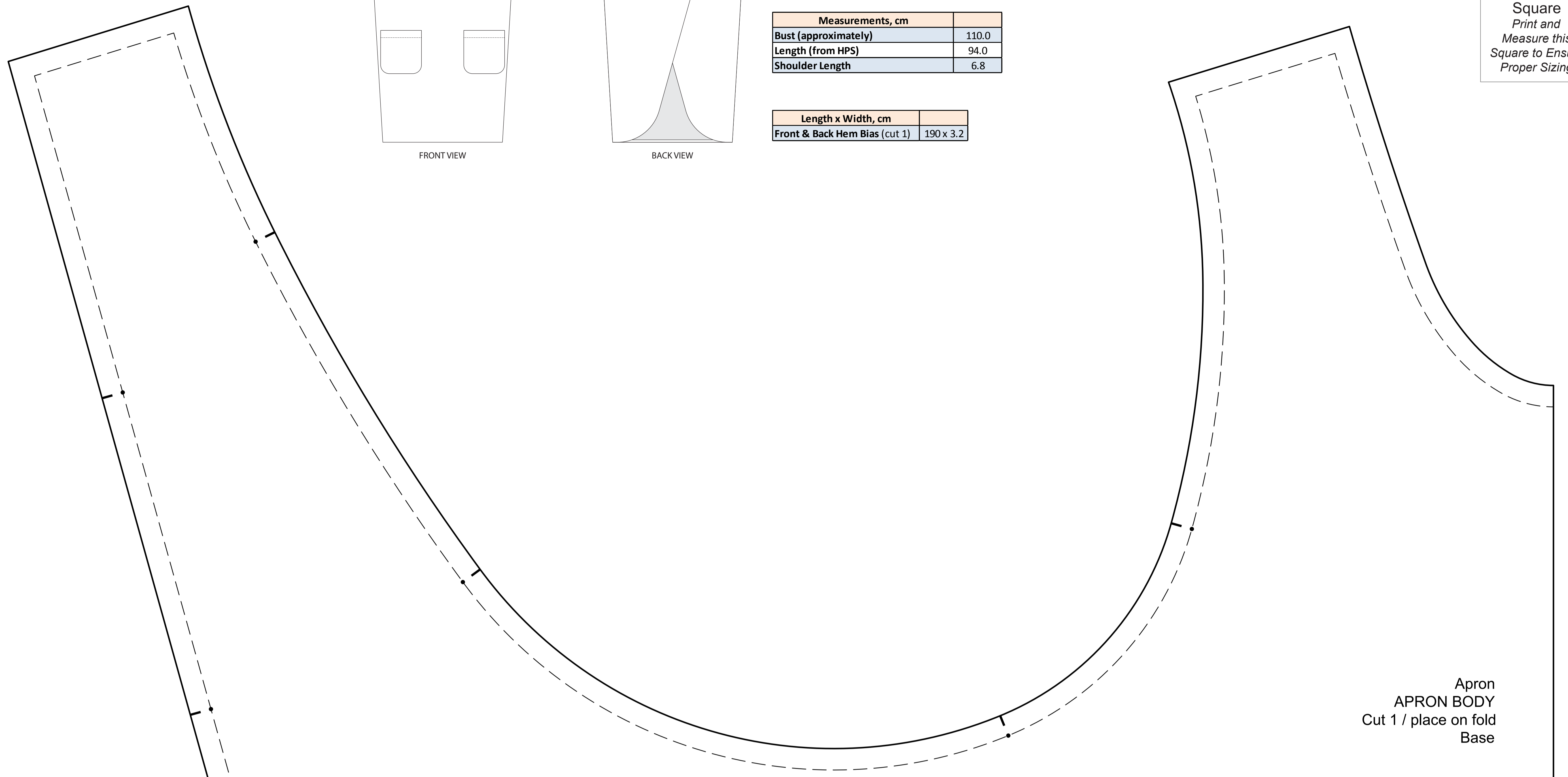
FRONT VIEW



BACK VIEW

Measurements, cm	
Bust (approximately)	110.0
Length (from HPS)	94.0
Shoulder Length	6.8

Length x Width, cm	
Front & Back Hem Bias (cut 1)	190 x 3.2



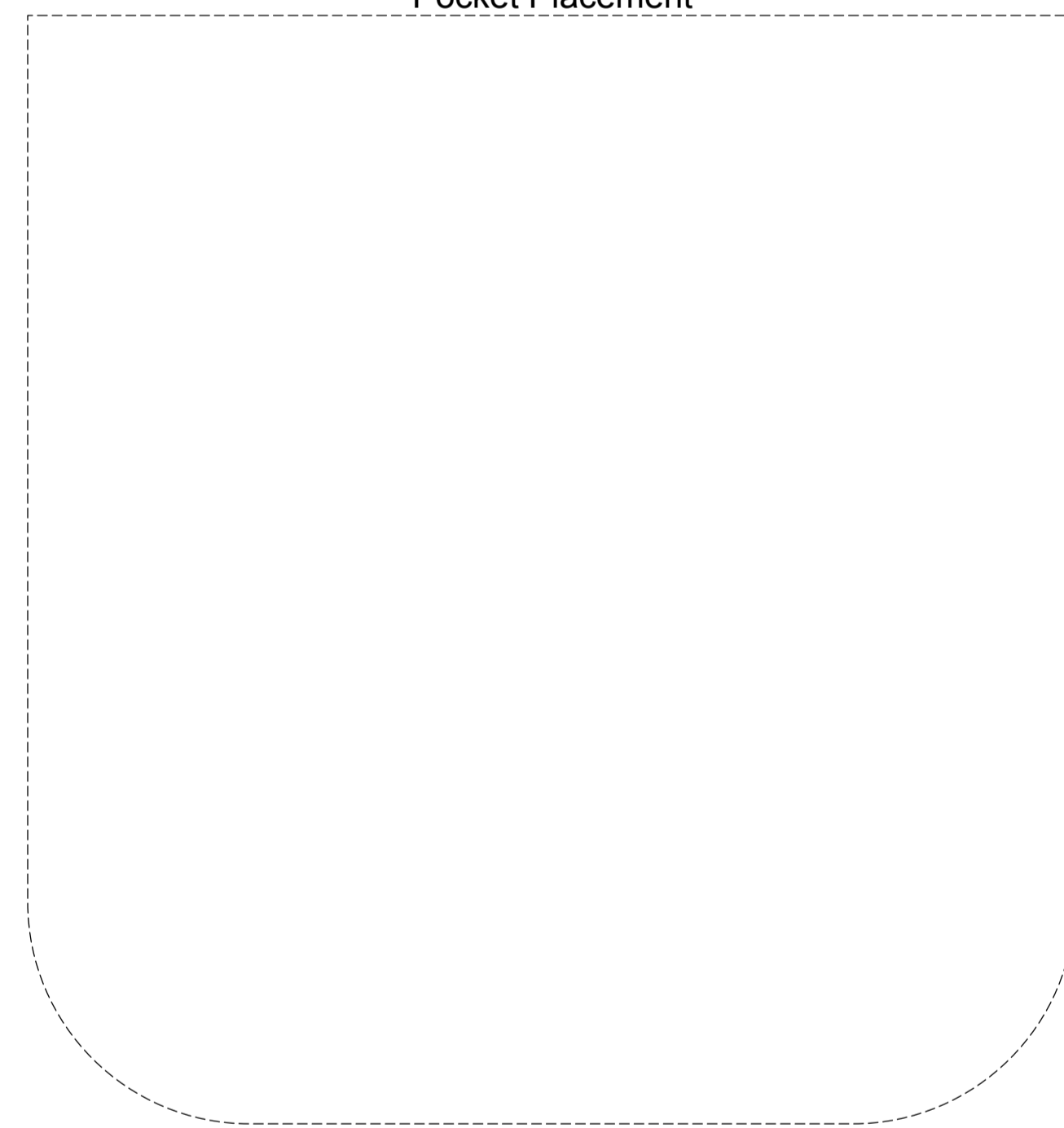
Apron  
APRON BODY  
Cut 1 / place on fold  
Base

Apron Facing



grainline

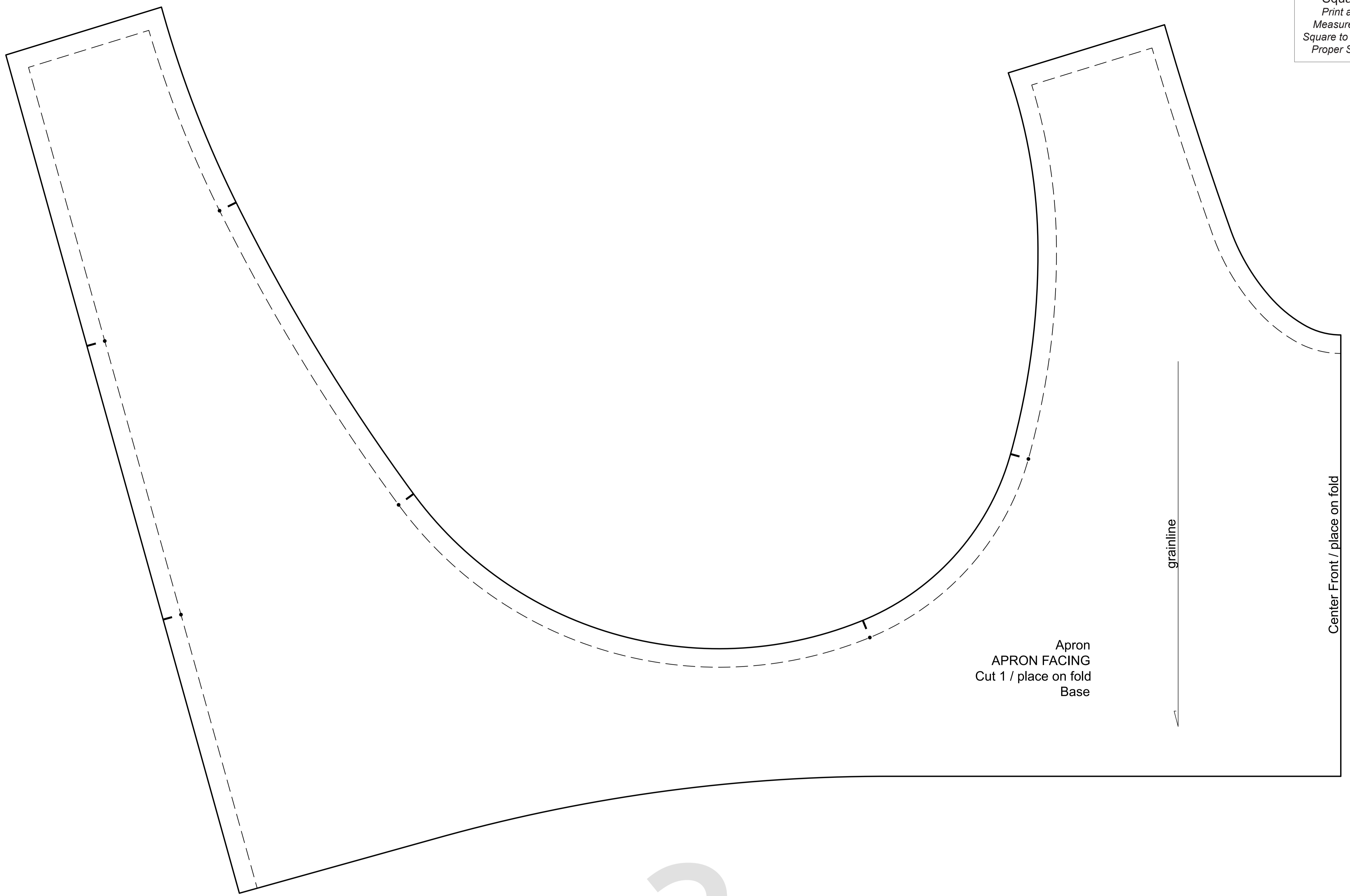
Pocket Placement



Center Front / place on fold

Bias Edge

5 x 5 cm  
Square  
Print and  
Measure this  
Square to Ensure  
Proper Sizing



2

