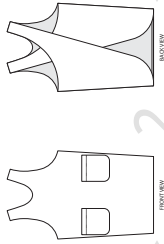


Japan Apron

paper size: A4

5 x 5 cm
Square
Measure the
Square Size
Paper Size



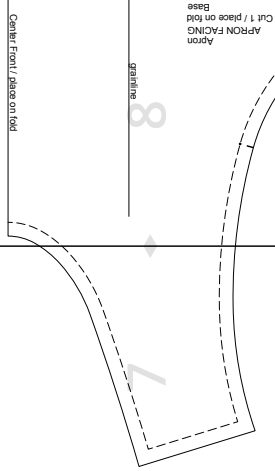
FRONT VIEW

BACK VIEW

Size	Waistband Width	Waistband Length	Waistband Height	Waistband Depth
S	10	100	10	10
M	10	100	10	10
L	10	100	10	10

Waistband Width: 10 cm
Waistband Length: 100 cm
Waistband Height: 10 cm
Waistband Depth: 10 cm

1



13

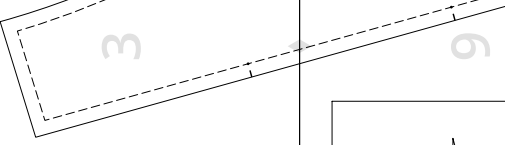
14

15

16

17

18

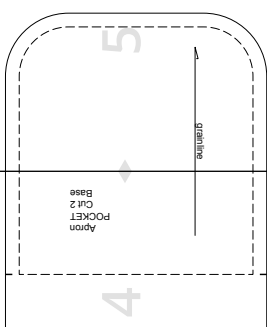


9

10

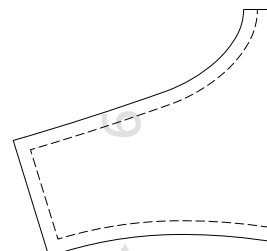
11

12



4

5



6

8

21

22

23

24

20

21

22

23

24

19

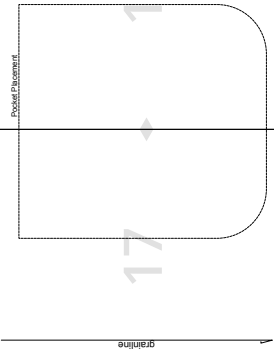
20

21

22

23

24



Center Front / place on fold

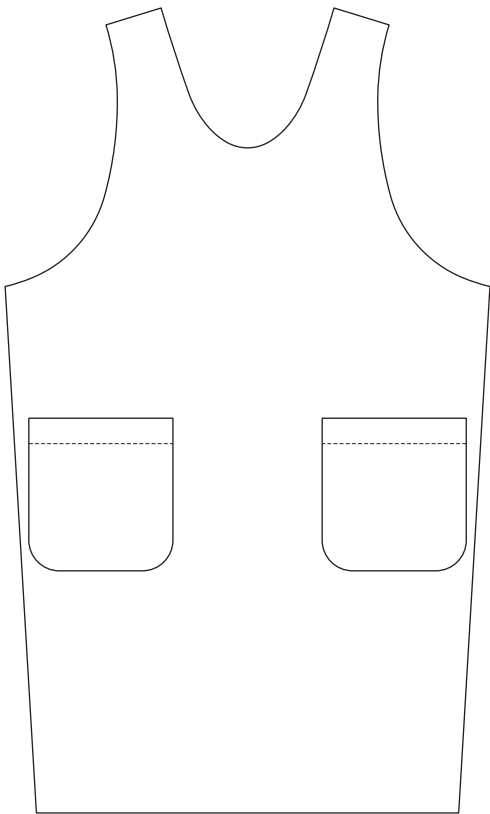
Base Place

Japan Apron

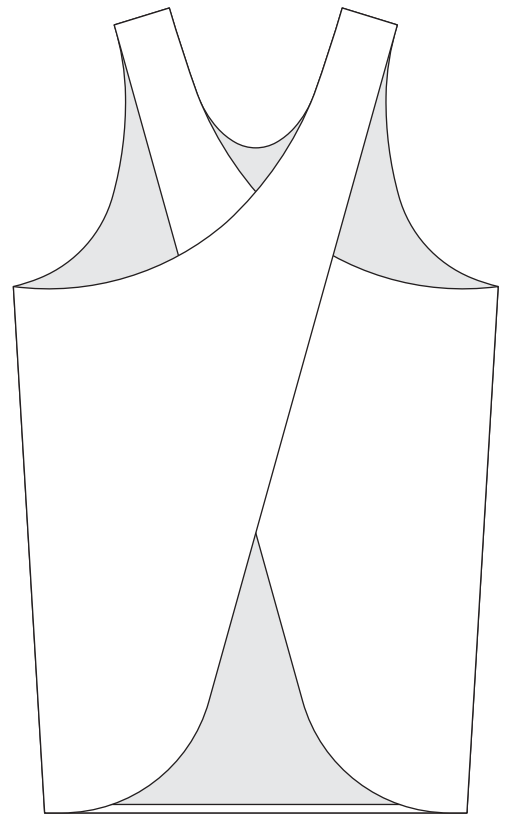
paper size: A4

5 x 5 cm
Square
*Print and
Measure this
Square to Ensure
Proper Sizing*





FRONT VIEW

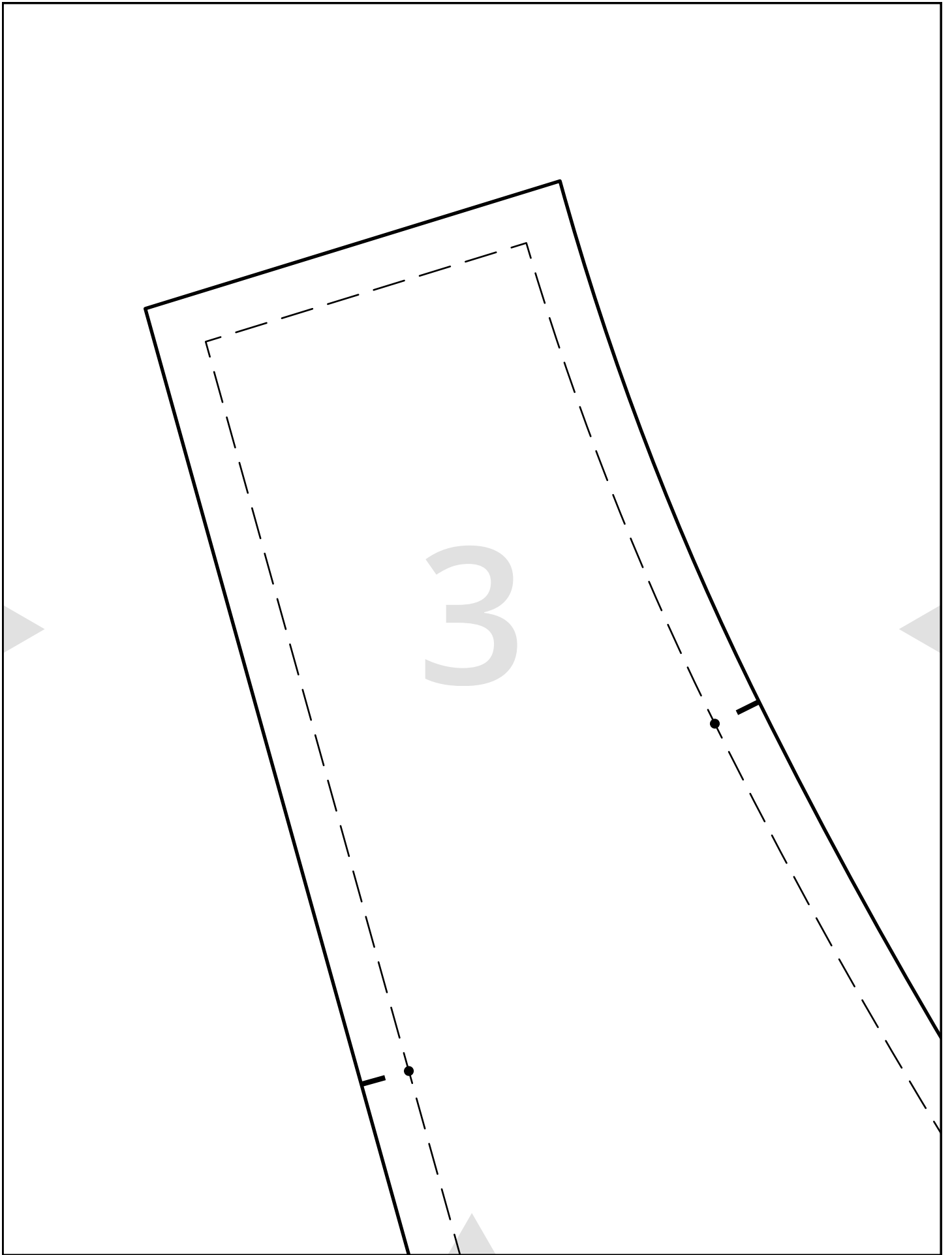


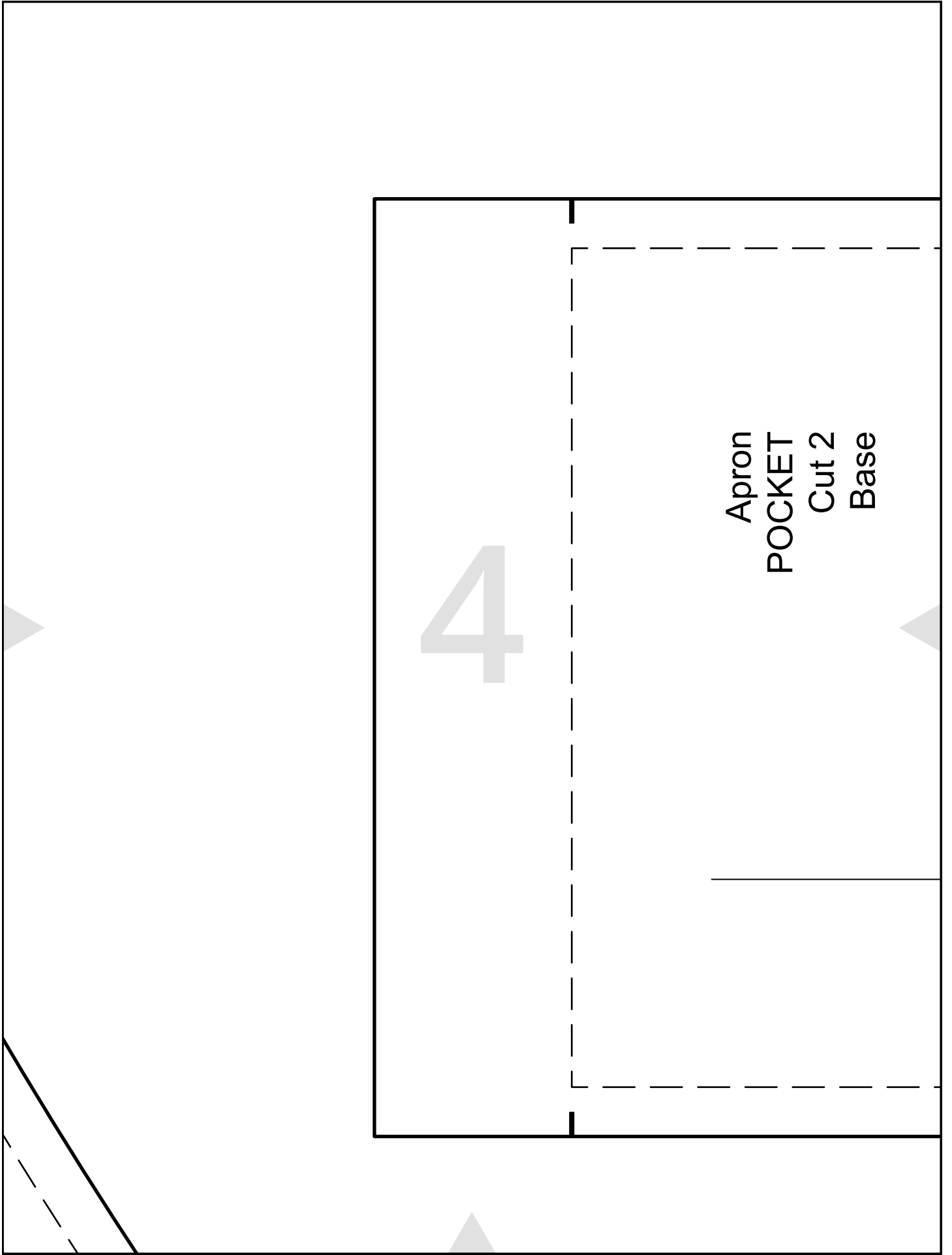
BACK VIEW

2

Measurements, cm	
Bust (approximately)	110.0
Length (from HPS)	94.0
Shoulder Length	6.8

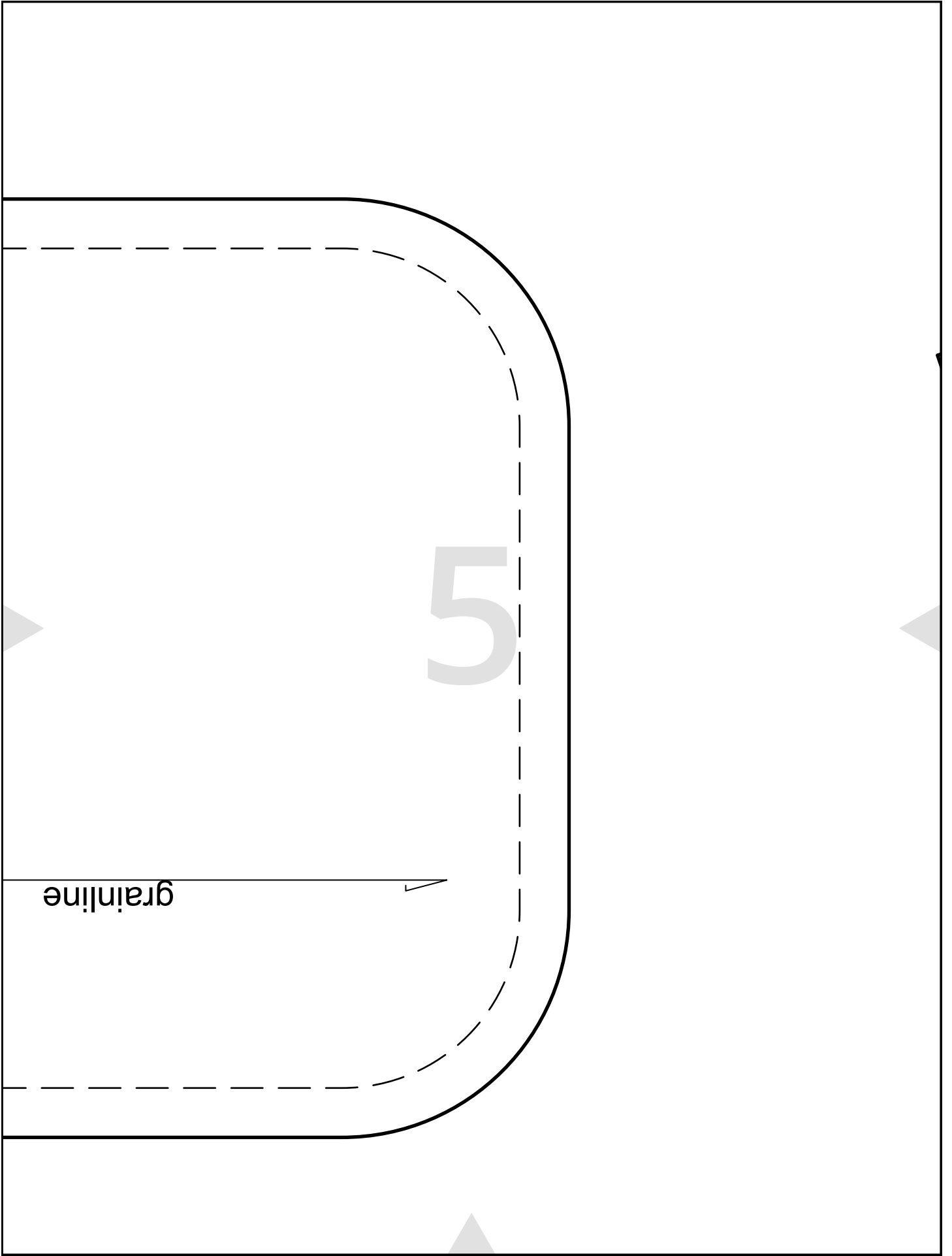
Length x Width, cm	
Front & Back Hem Bias (cut 1)	190 x 3.2





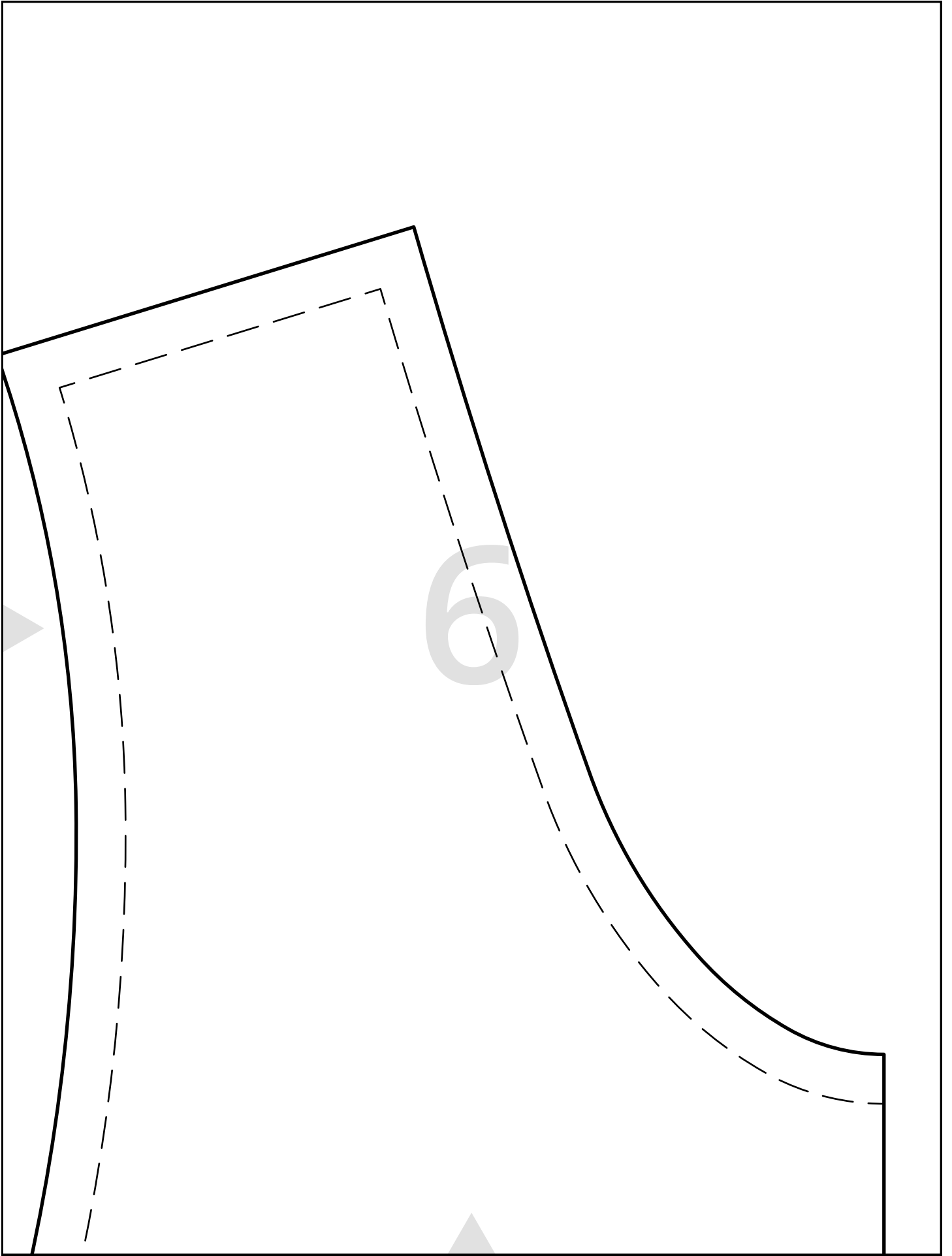
4

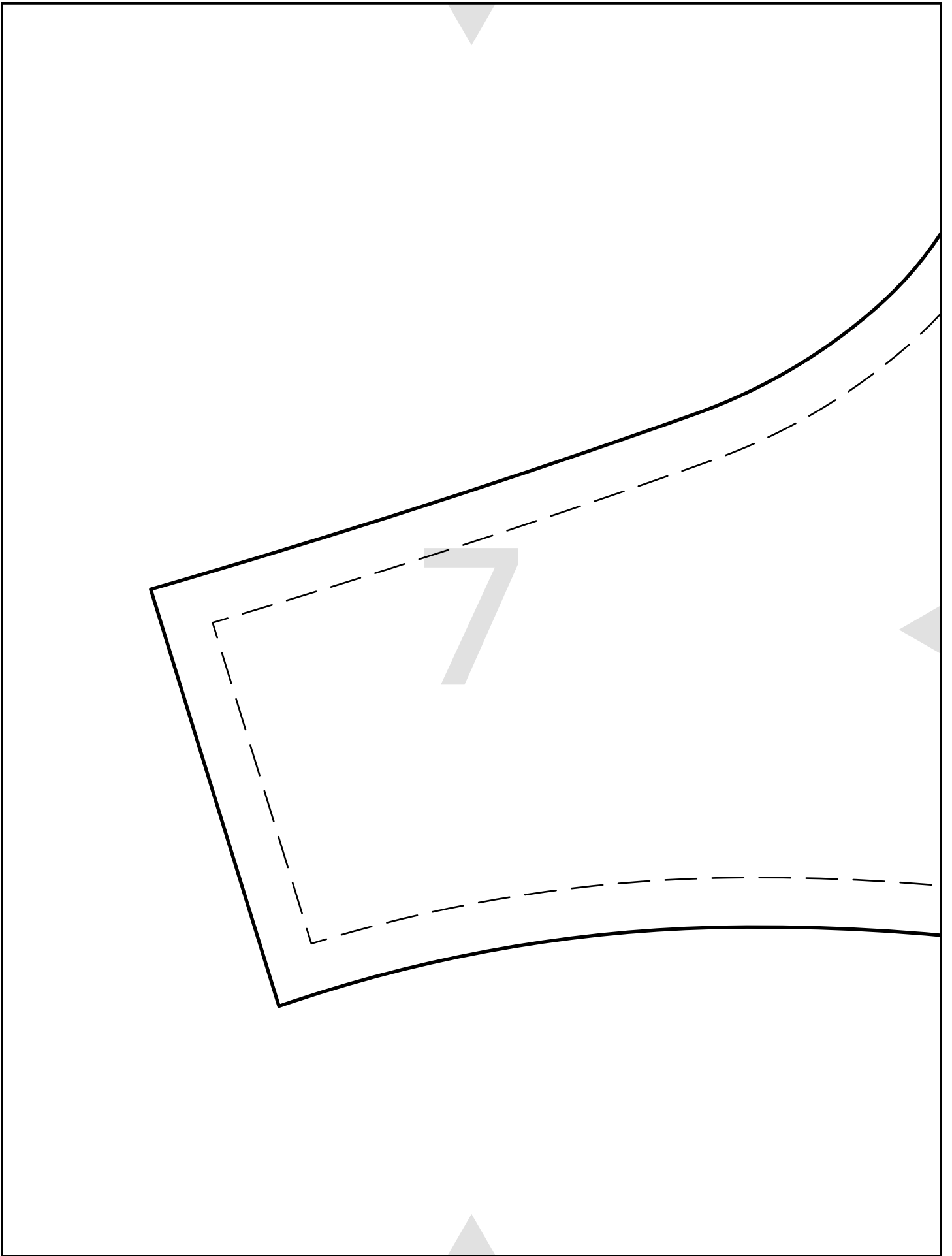
Apron
POCKET
Cut 2
Base



grainline

5



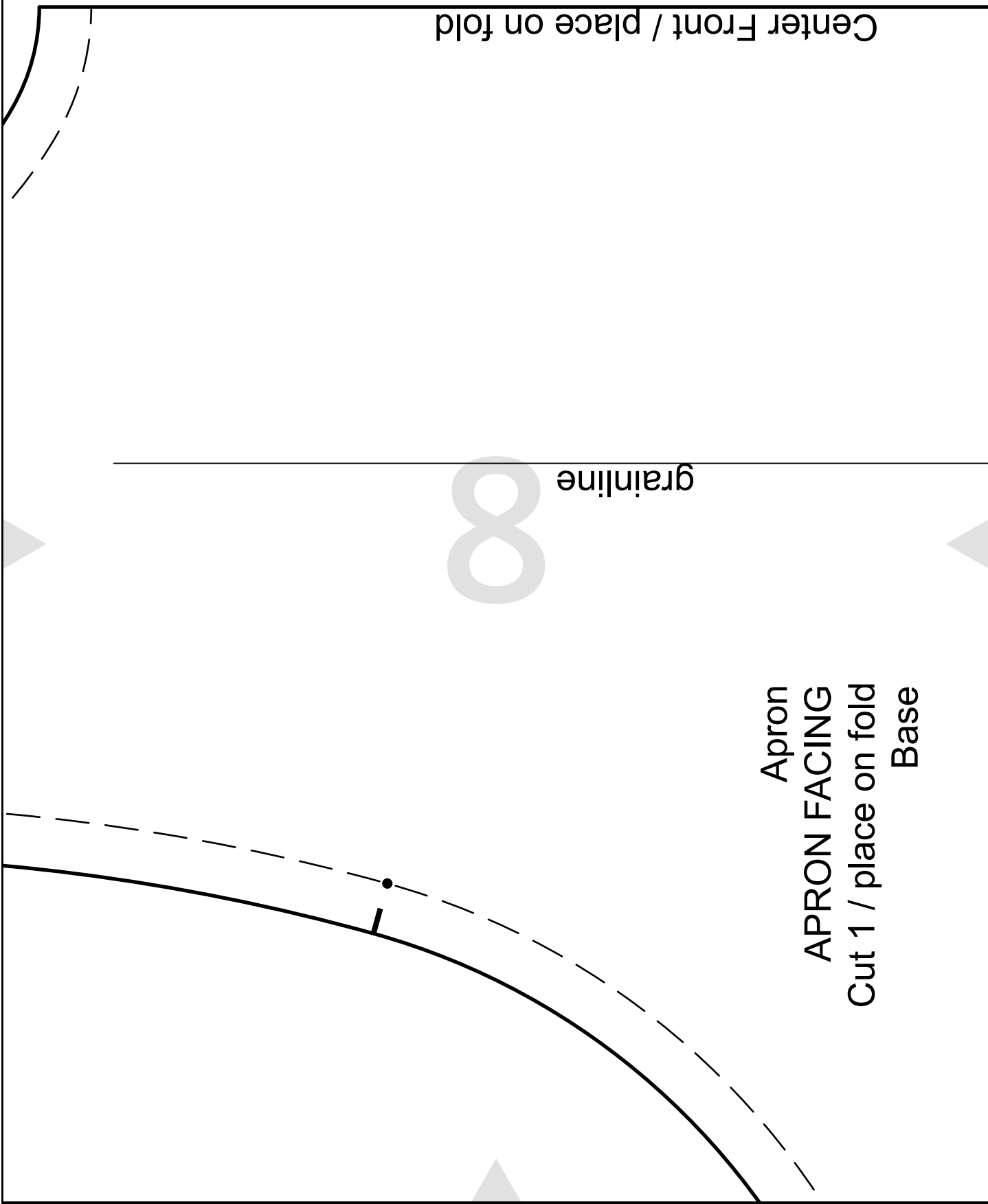


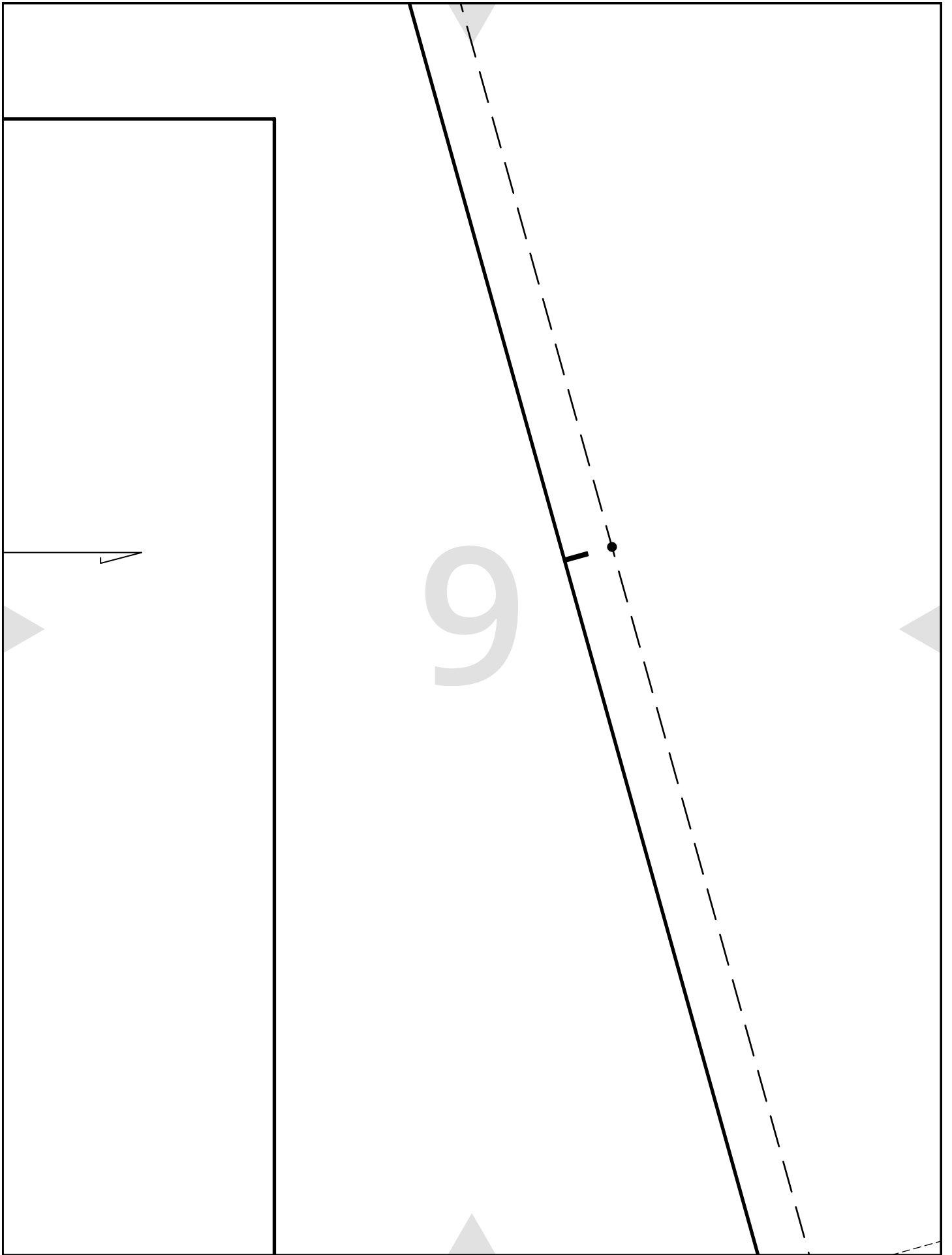
Center Front / place on fold

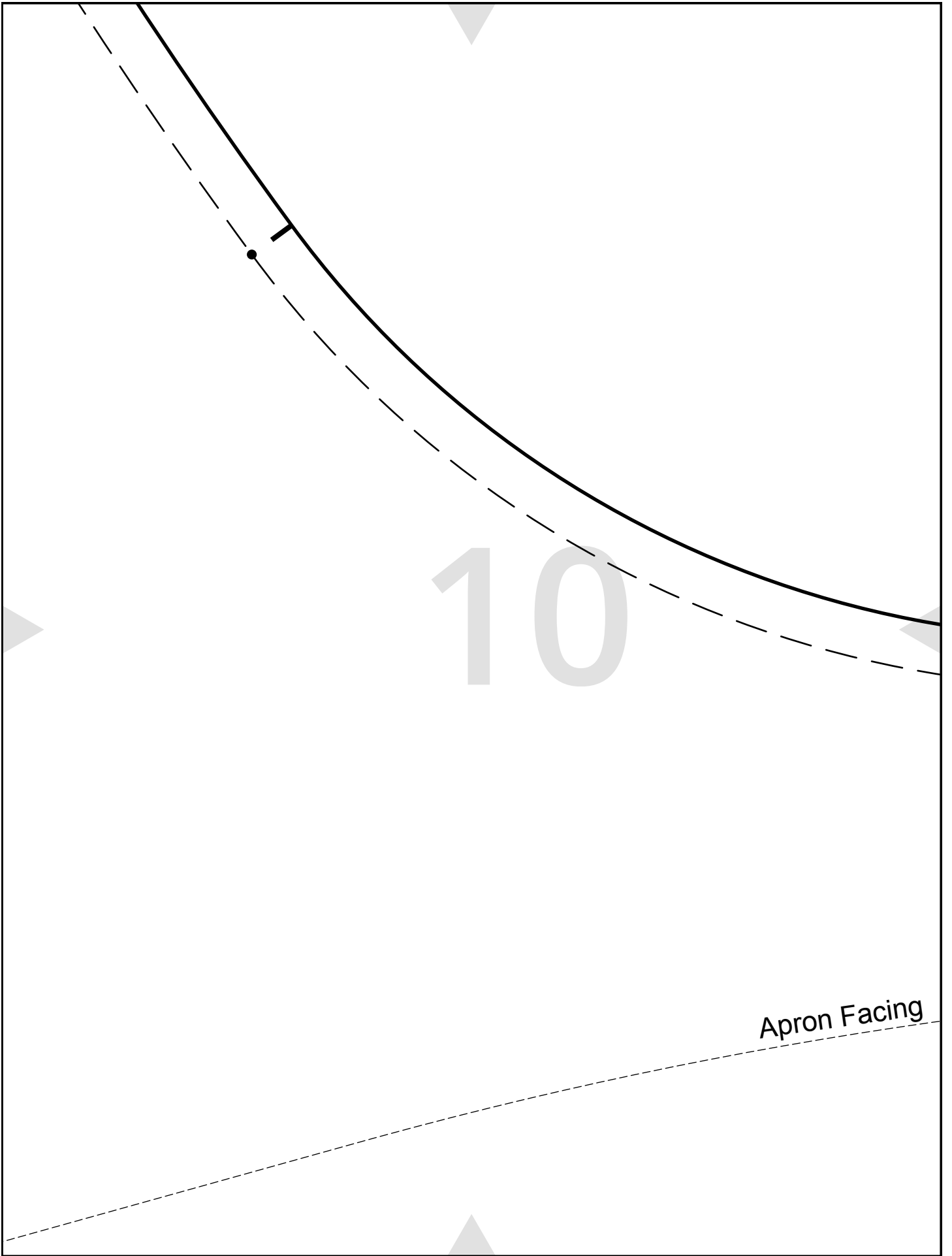
grainline

8

Apron
APRON FACING
Cut 1 / place on fold
Base

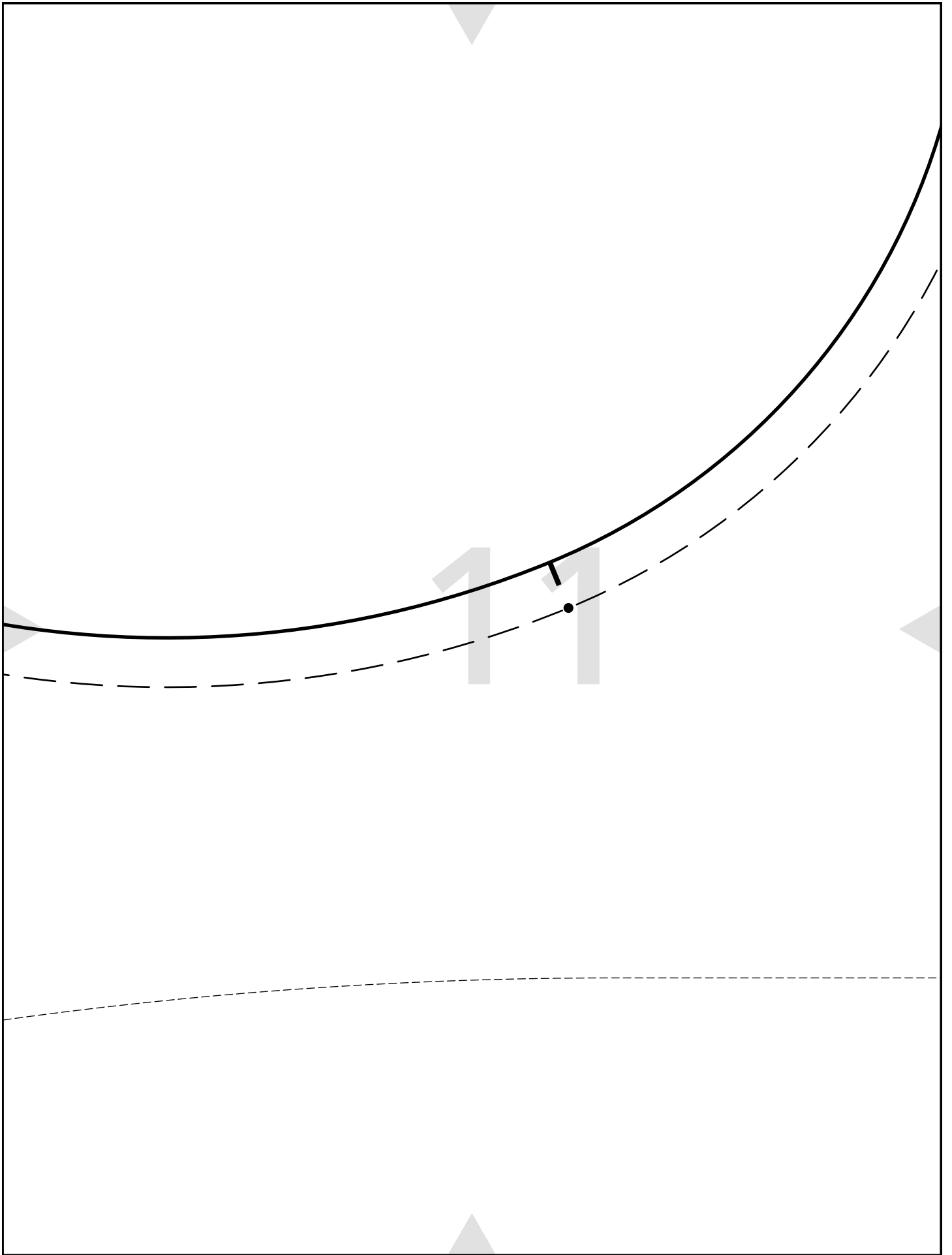


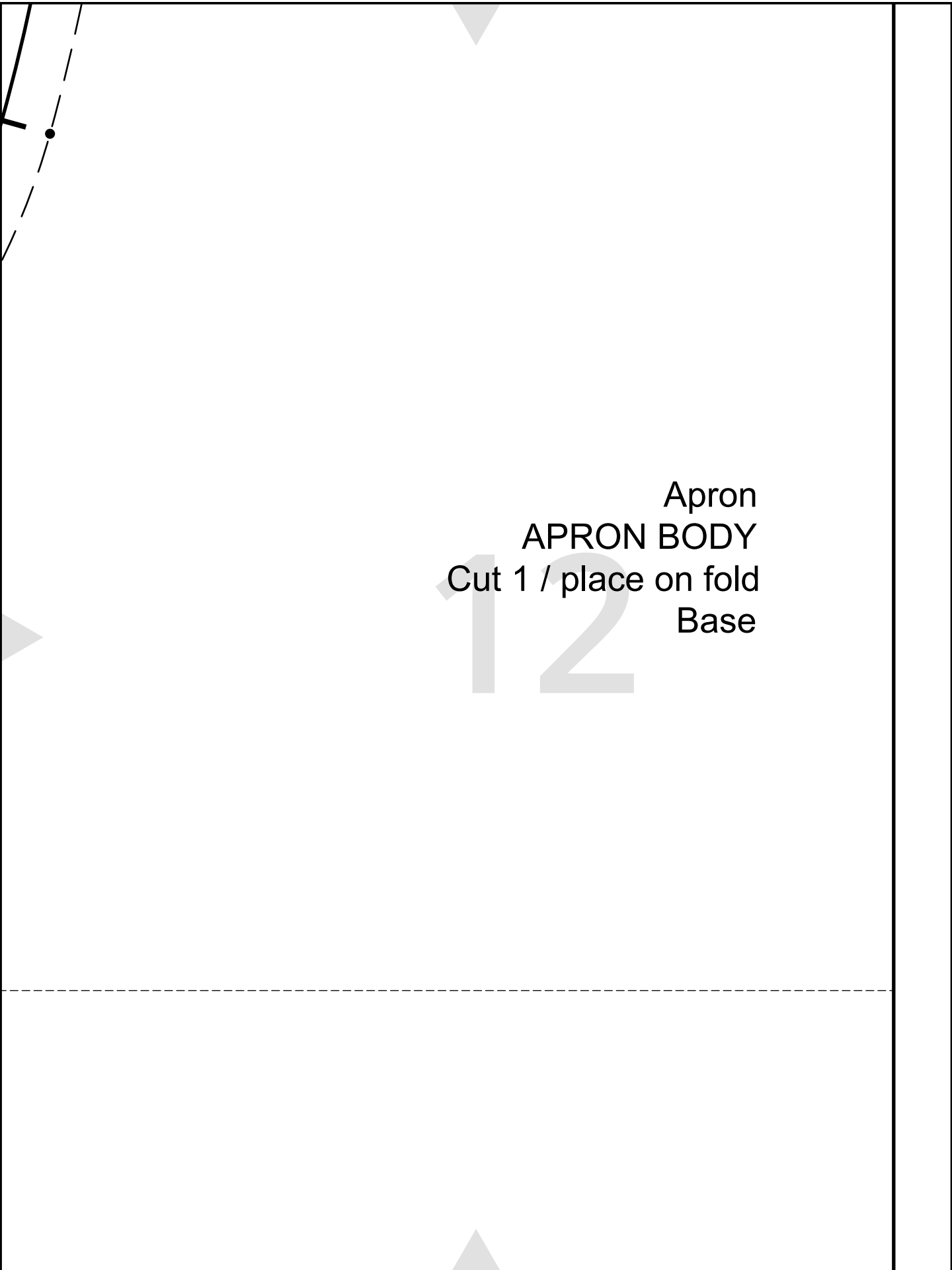




Apron Facing

10

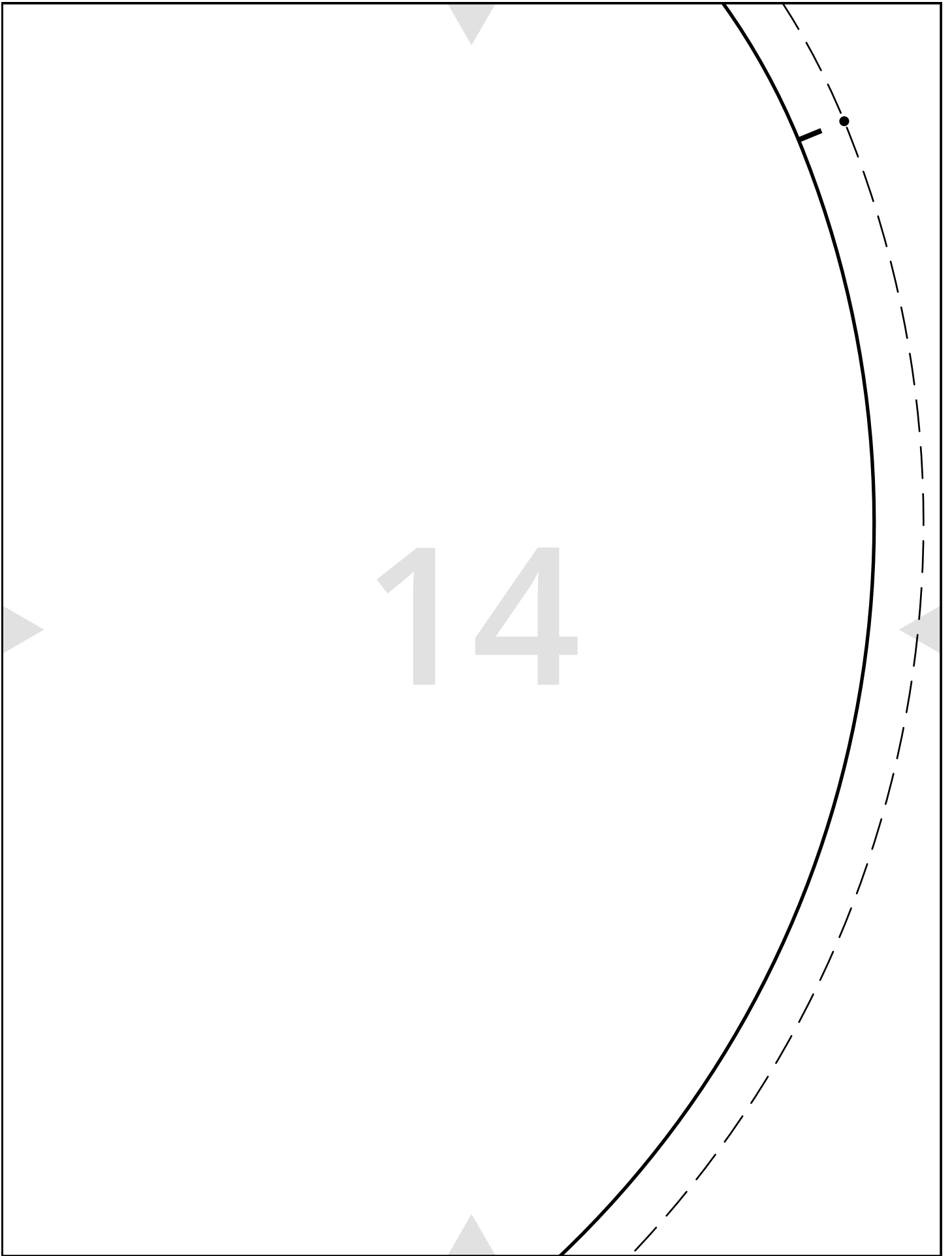




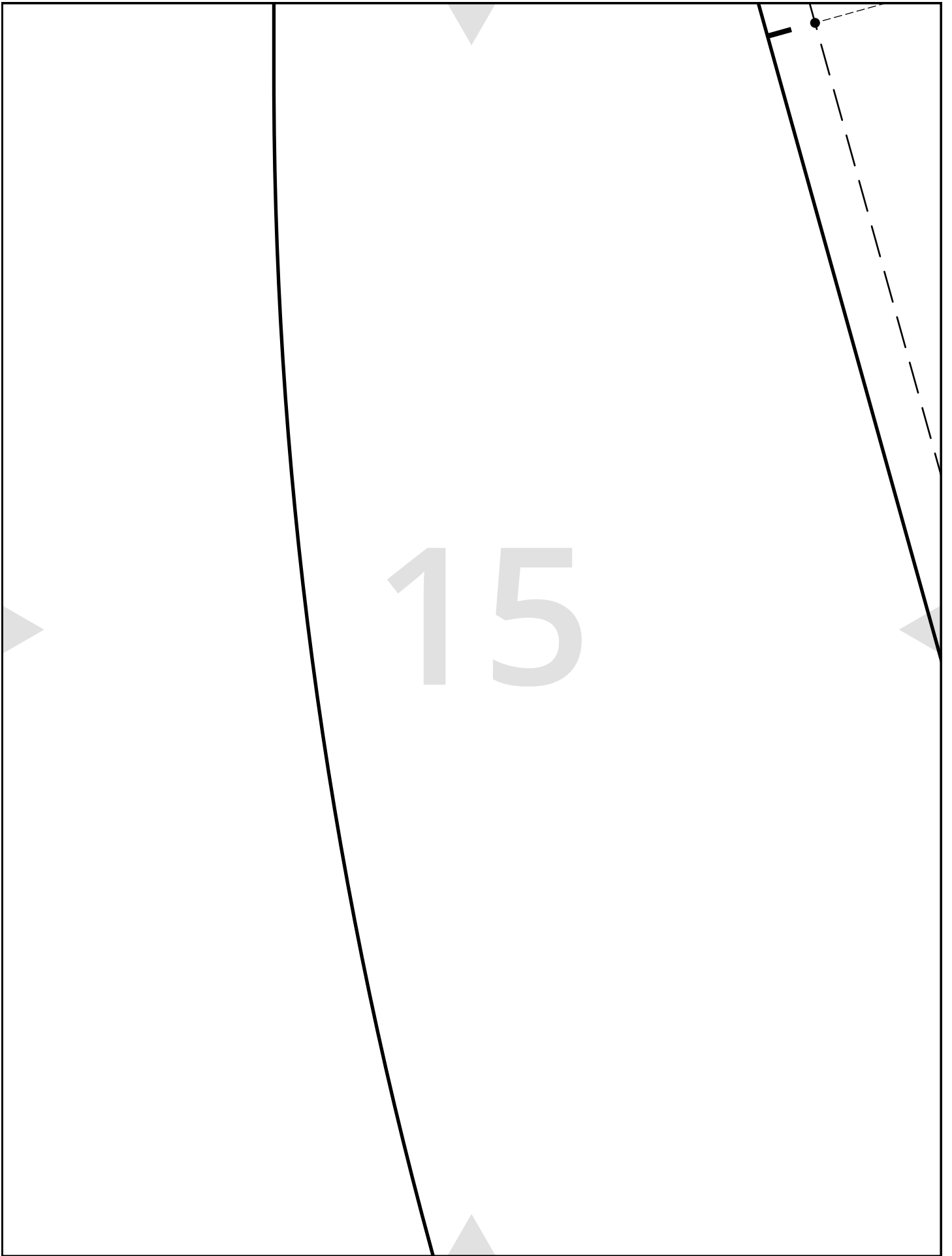
Apron
APRON BODY
Cut 1 / place on fold
Base

13

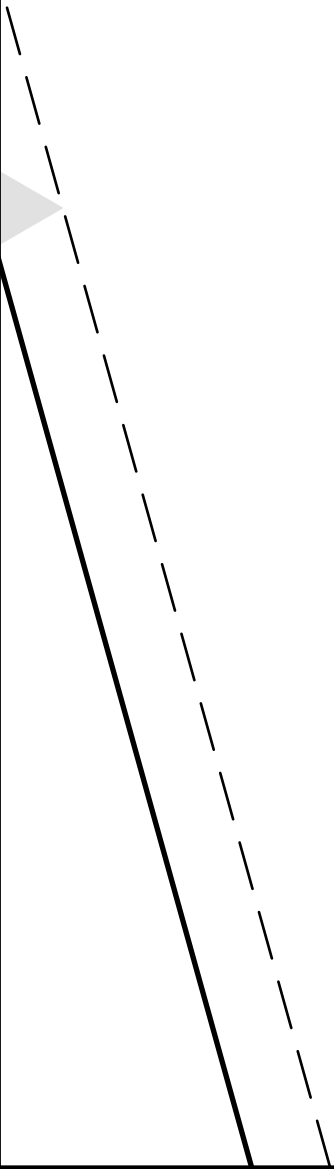
14



15

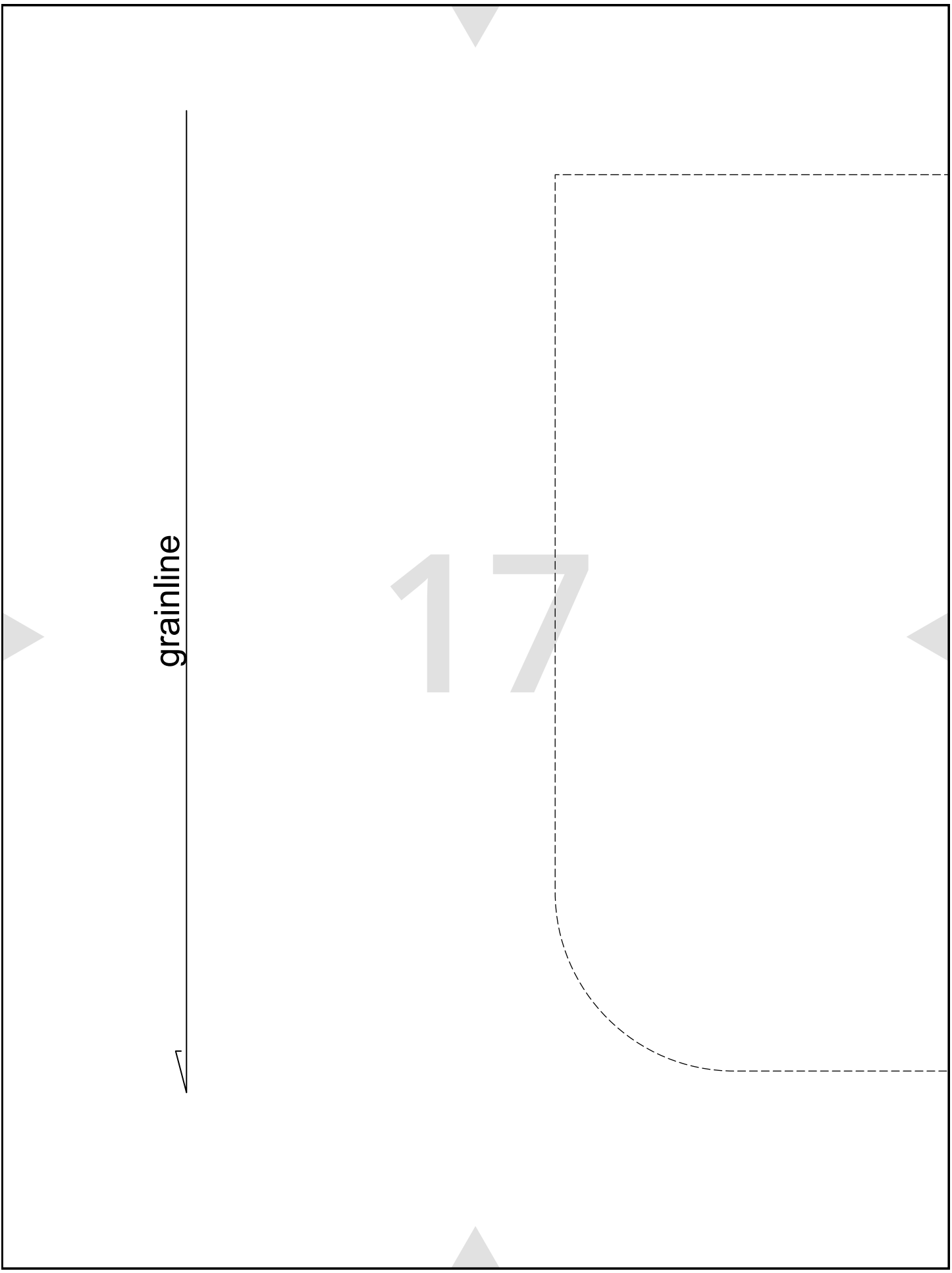
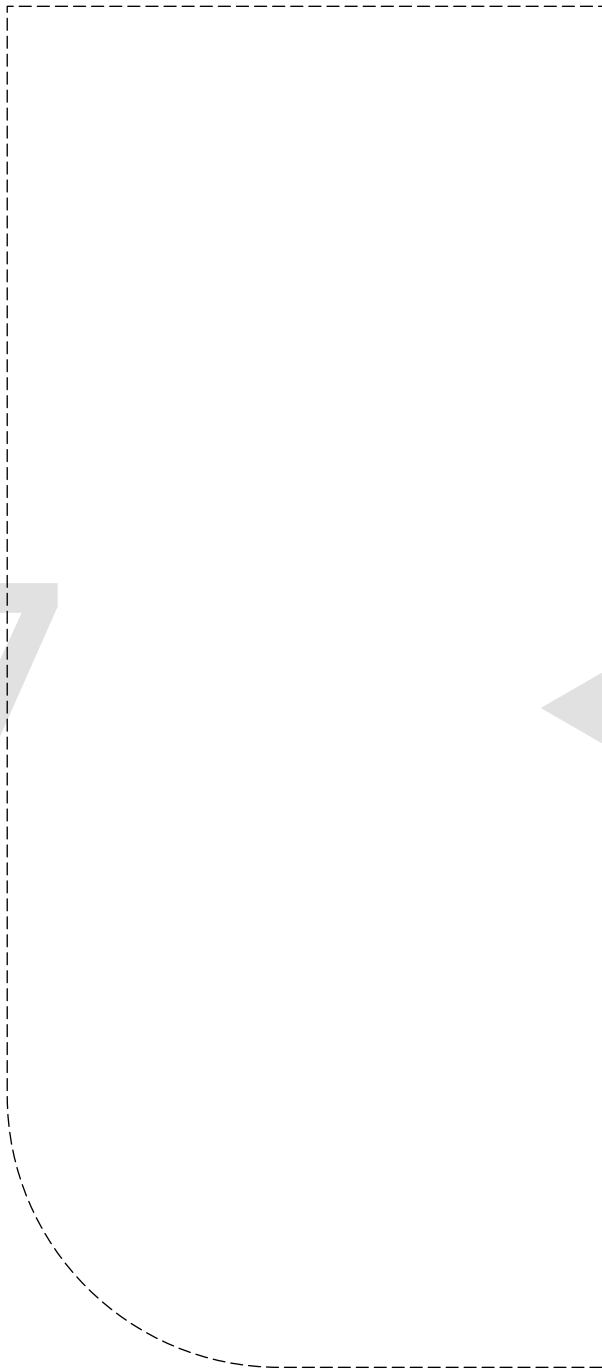


16



17

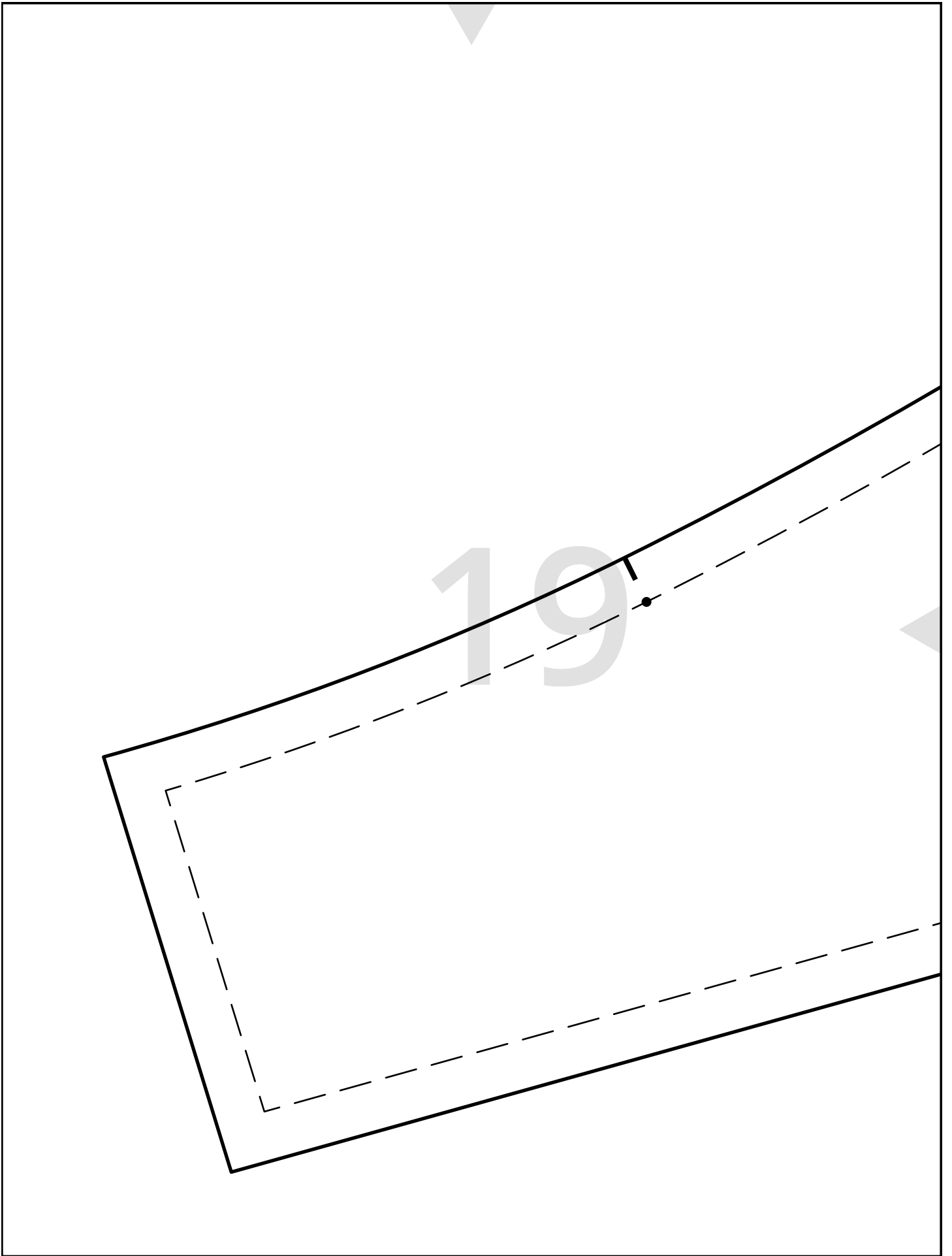
grainline

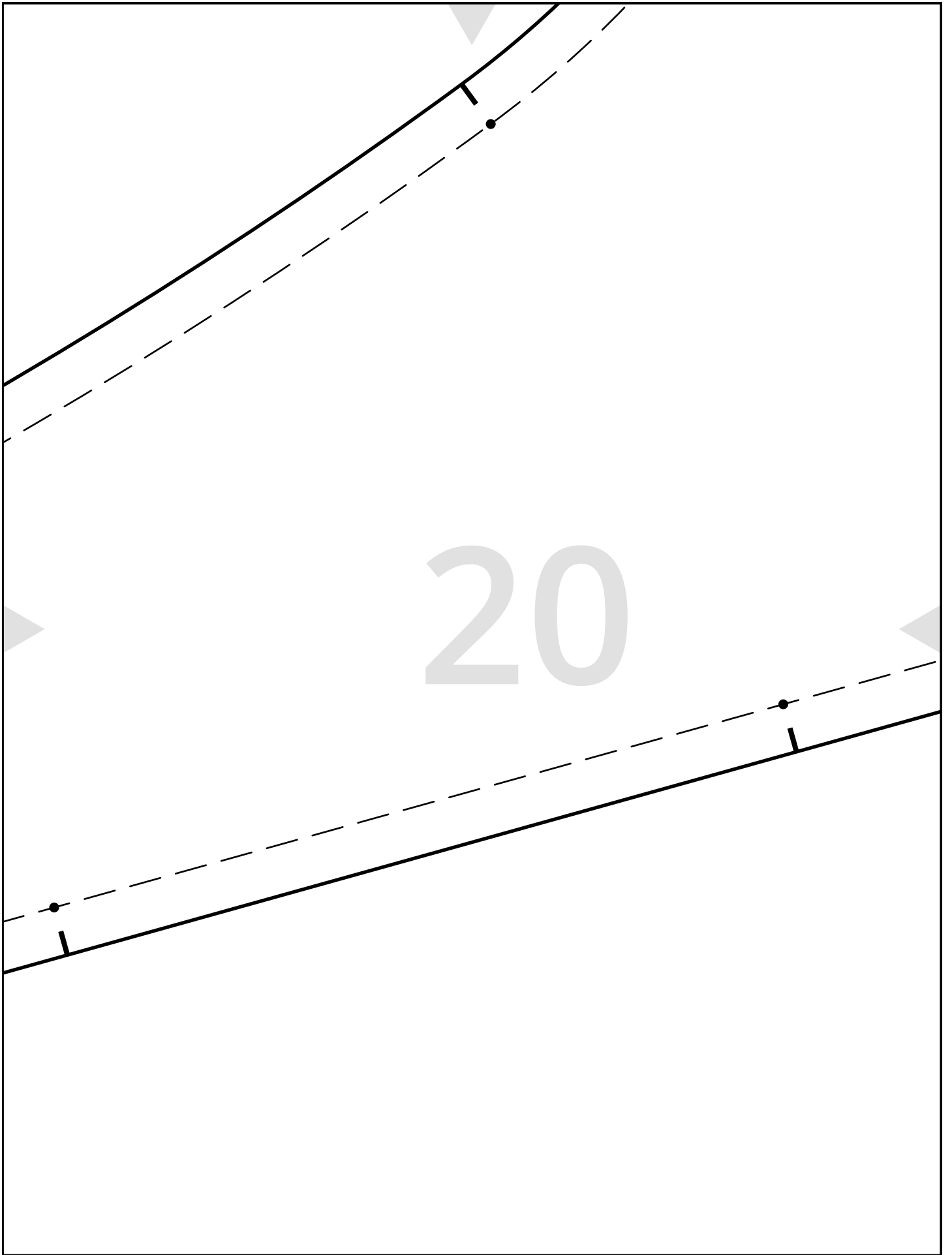


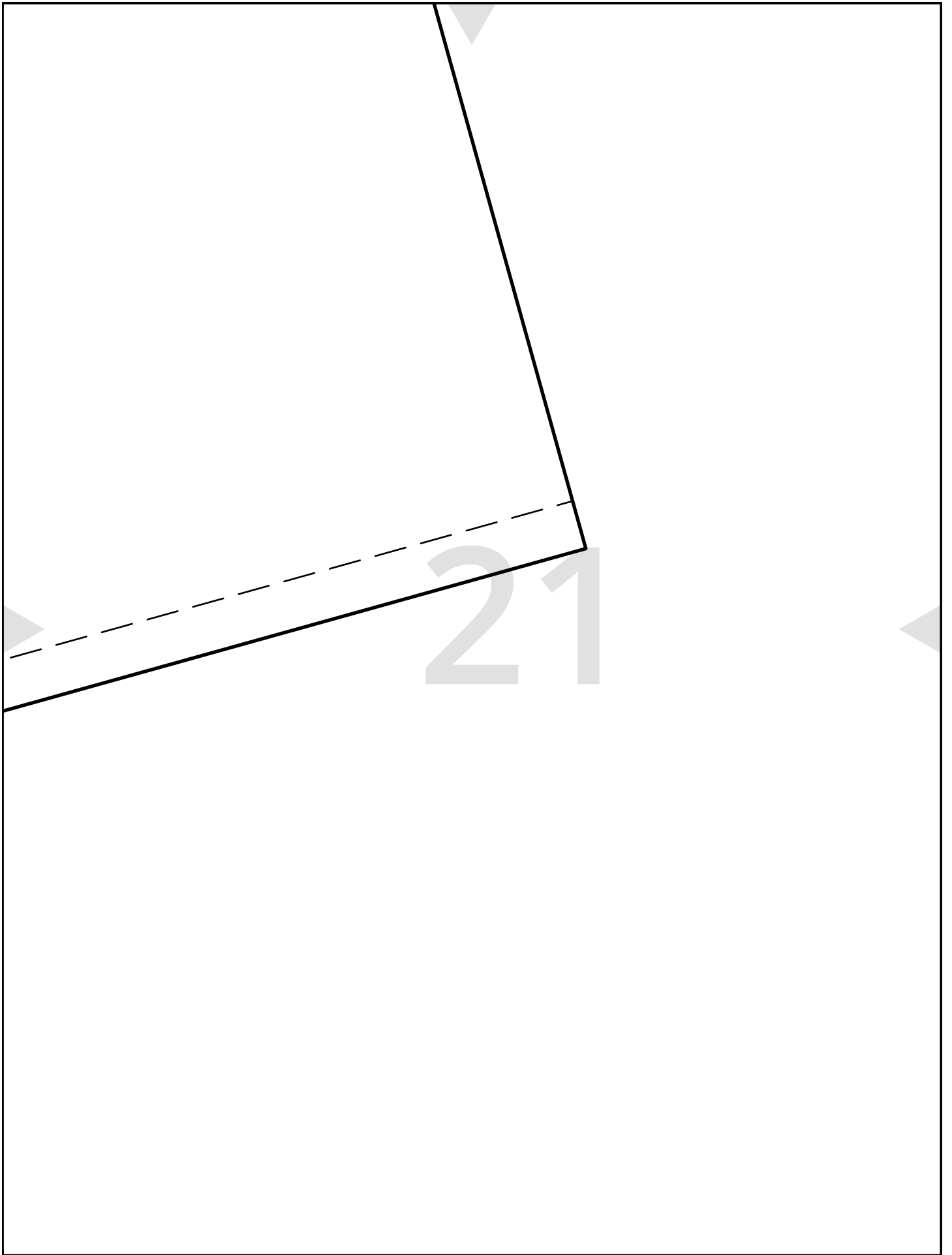
Pocket Placement

18

Center Front / place on fold

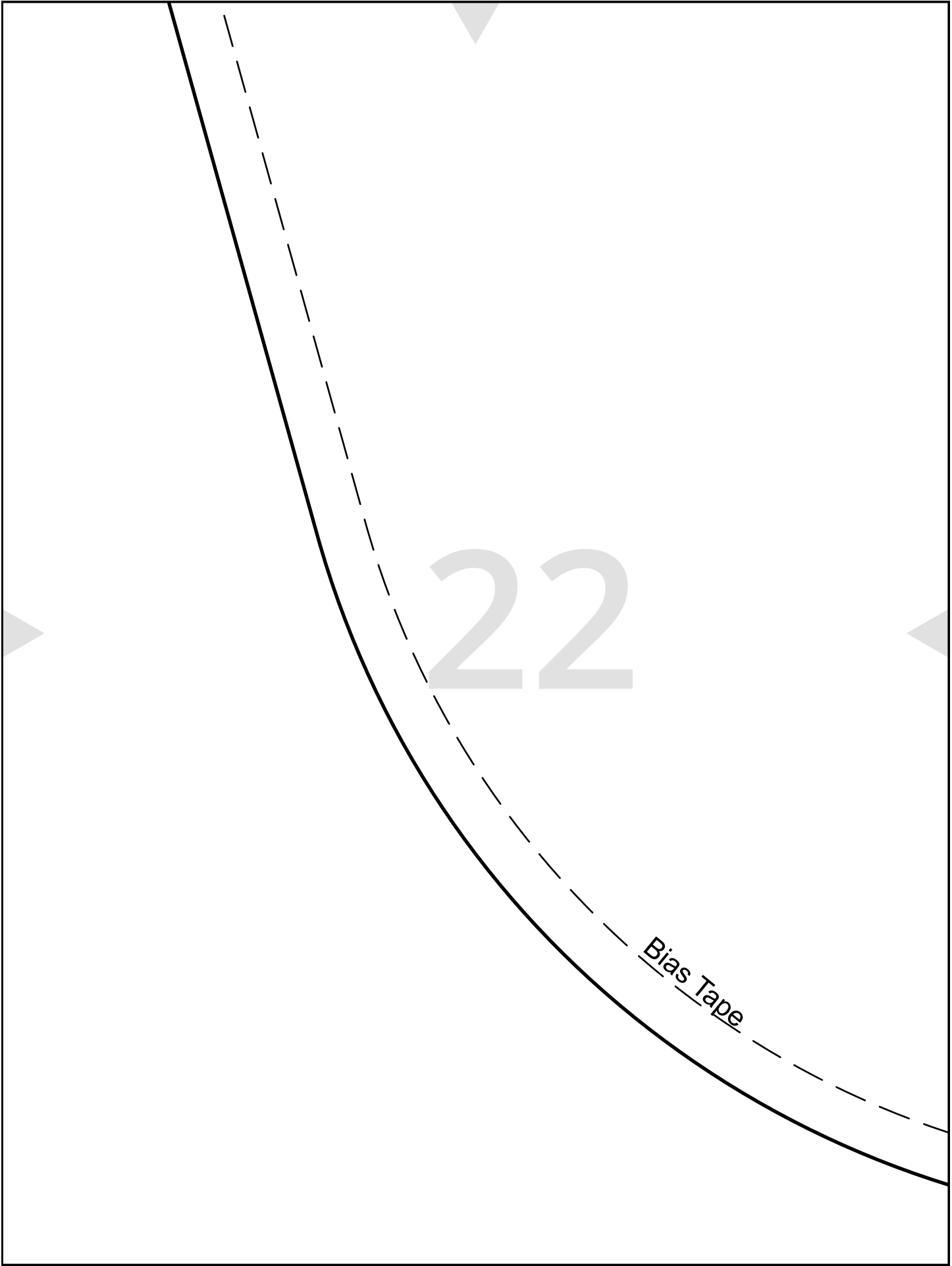




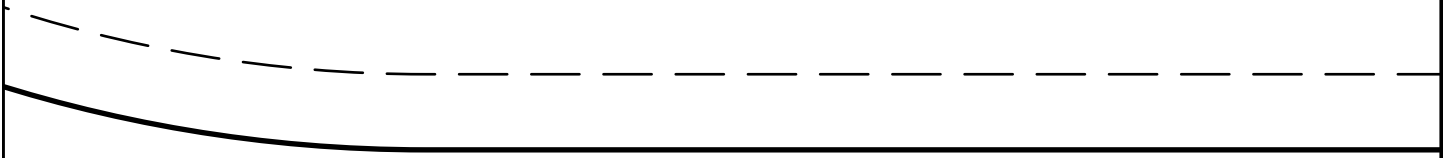


22

Bias Tape



23



24